

Austin & Austin

Realty Brokerage

Austin & Austin Realty • #3-35 Whyte Avenue, Box 790, Dryden, Ontario, P8N 2Z4 • Fax (807) 223-5933 Phone (807) 223-6215



\$39,000

14 Earl Avenue

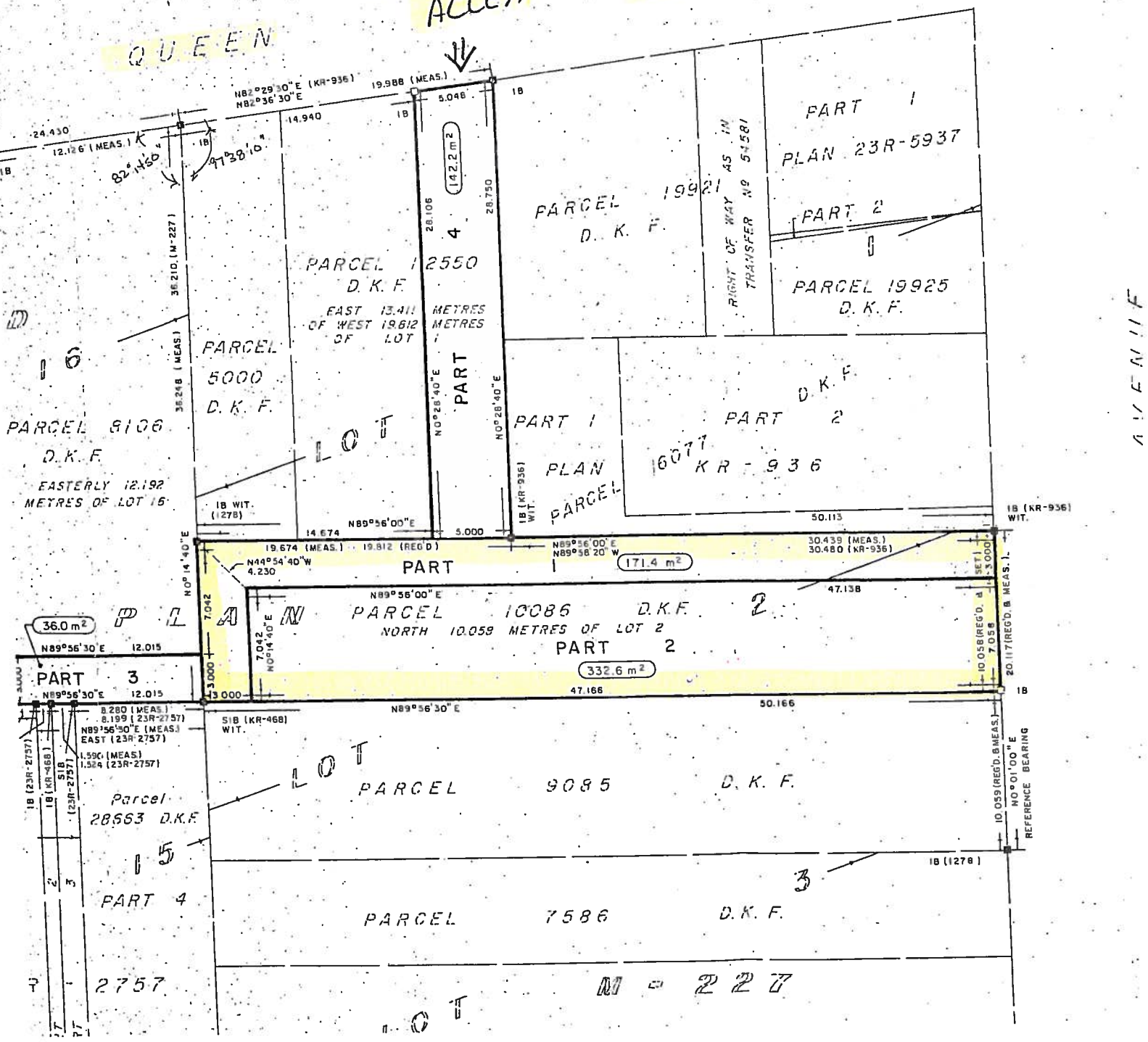
33' x 164'

Downtown Commercial development property. Located in the heart of the "Walk About" Downtown Business Core. This property location allows for a multitude of construction options. Rear yard parking accessed off laneway. Listing Broker: Mark Boudreau C-516

QUEEN

LANE ACCESS

STREET



QUEEN

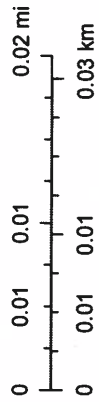
Dryden Realtors GIS Application



6/15/2020, 9:54:29 AM

- Streets
- Parks
- Green: Band_2
- Blue: Band_3
- Red: Band_1

1:1,128



Sources: Esri, HERE, Garmin, USGS, Intermap, INCREMENT P, NRCan,

Esri, HERE, Garmin, NGA, USGS, NPS | City of Dryden | Hydro One | Union Gas |