

# Austin & Austin

Realty Ltd.

Brokerage

Austin & Austin Realty Ltd. • #3-35 Whyte Avenue, Box 790, Dryden, Ontario, P8N 2Z4 • Fax (807) 223-5933 Phone (807) 223-6215



**\$59,000**

**14 Earl Avenue**

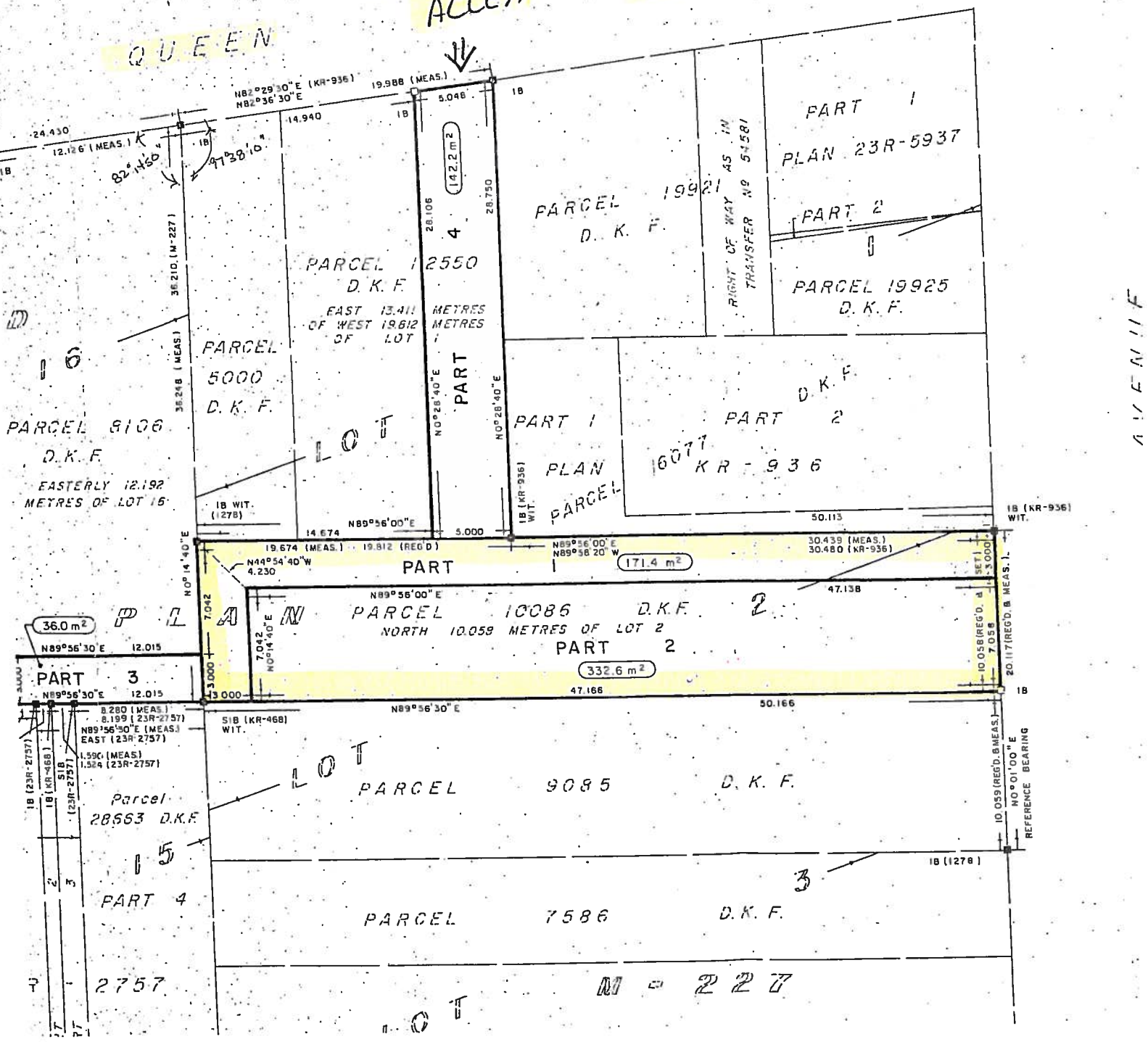
**33' x 164'**

**Downtown Commercial development property. Located in the heart of the "Walk About" Downtown Business Core. This property location allows for a multitude of construction options. Rear yard parking accessed off laneway. Listing Broker: Mark Boudreau C-343**

QUEEN

LANE ACCESS

STREET



16  
 PARCEL 8108  
 D.K.F.  
 EASTERLY 12.192 METRES OF LOT 15

PARCEL 5000  
 D.K.F.

PARCEL 12550  
 D.K.F.  
 EAST 13.411 METRES OF WEST 19.612 METRES OF LOT 1

PARCEL 19921  
 D.K.F.  
 PART 1  
 PART 2  
 PLAN 16077 KR-936

PART 1  
 PLAN 23R-5937  
 PART 2

PARCEL 19925  
 D.K.F.

PARCEL 10086  
 D.K.F.  
 NORTH 10.059 METRES OF LOT 2  
 PART 2

PART 3

PARCEL 9085  
 D.K.F.

PART 4  
 PARCEL 7586  
 D.K.F.

2757

N = 227

GIVEN IF

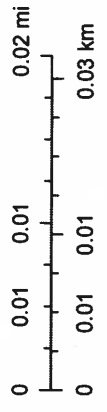
# Dryden Realtors GIS Application



6/15/2020, 9:54:29 AM

- Streets
- Parks
- Green: Band\_2
- Blue: Band\_3
- Red: Band\_1

1:1,128



Sources: Esri, HERE, Garmin, USGS, Intermap, INCREMENT P, NRCan,

Esri, HERE, Garmin, NGA, USGS, NPS | City of Dryden | Hydro One | Union Gas |